

Intro to ALL data for Bioc monograph

VJ Carey

October 30, 2025

1 Introduction

This document is for authors of the Bioc monograph, it just goes over various aspects of the ALL data. Example analyses can be added here for illustration.

2 Attachment and data list

```
> library(ALL)
> data(ALL)
> show(ALL)
```

```
ExpressionSet (storageMode: lockedEnvironment)
assayData: 12625 features, 128 samples
  element names: exprs
protocolData: none
phenoData
  sampleNames: 01005 01010 ... LAL4 (128 total)
  varLabels: cod diagnosis ... date last seen (21 total)
  varMetadata: labelDescription
featureData: none
experimentData: use 'experimentData(object)'
  pubMedIds: 14684422 16243790
Annotation: hgu95av2
```

3 Tables and graphs for phenodata

```
> print(summary(pData(ALL)))
```

cod	diagnosis	sex	age	BT
Length:128	Length:128	F :42	Min. : 5.00	B2 :36

Class :character	Class :character	M :83	1st Qu.:19.00	B3 :23
Mode :character	Mode :character	NA's: 3	Median :29.00	B1 :19
			Mean :32.37	T2 :15
			3rd Qu.:45.50	B4 :12
			Max. :58.00	T3 :10
			NA's :5	(Other):13

remission	CR	date.cr	t(4;11)
CR :99	Length:128	Length:128	Mode :logical
REF :15	Class :character	Class :character	FALSE:86
NA's:14	Mode :character	Mode :character	TRUE :7
			NA's :35

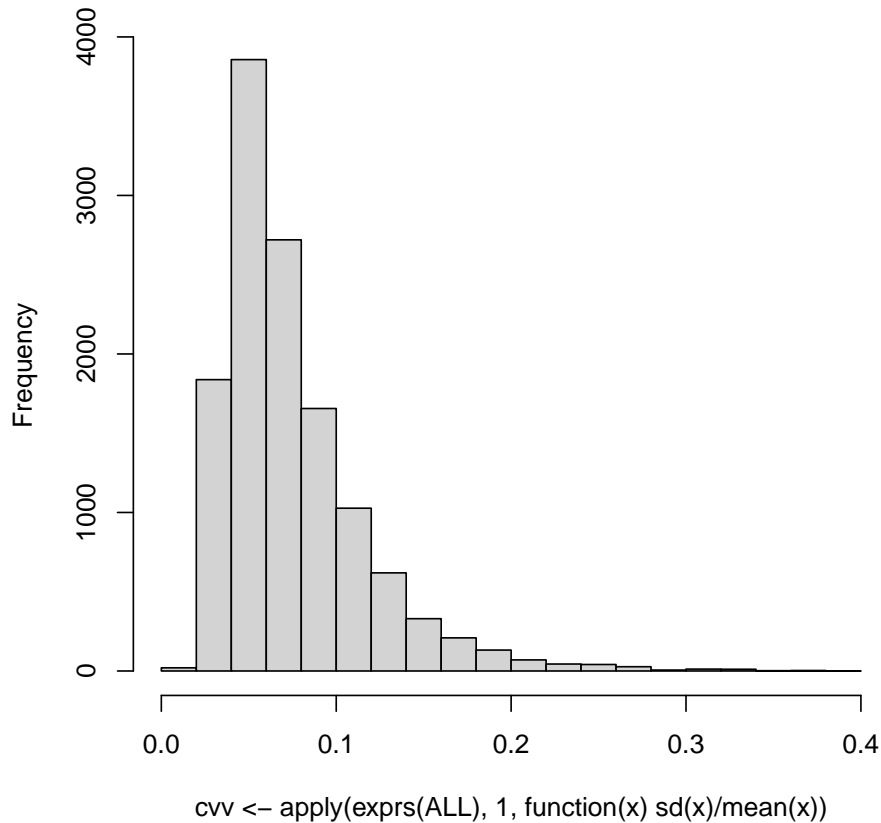
t(9;22)	cyto.normal	citog	mol.biol
Mode :logical	Mode :logical	Length:128	ALL1/AF4:10
FALSE:67	FALSE:69	Class :character	BCR/ABL :37
TRUE :26	TRUE :24	Mode :character	E2A/PBX1: 5
NA's :35	NA's :35		NEG :74
			NUP-98 : 1
			p15/p16 : 1

fusion protein	mdr	kinet	ccr	relapse
p190 :17	NEG :101	dyploid:94	Mode :logical	Mode :logical
p190/p210: 8	POS : 24	hyperd.:27	FALSE:74	FALSE:35
p210 : 8	NA's: 3	NA's : 7	TRUE :26	TRUE :65
NA's :95			NA's :28	NA's :28

transplant	f.u	date last seen
Mode :logical	Length:128	Length:128
FALSE:91	Class :character	Class :character
TRUE :9	Mode :character	Mode :character
NA's :28		

```
> hist(cvv <- apply(exprs(ALL),1,function(x)sd(x)/mean(x)))
```

Histogram of `cvv <- apply(exprs(ALL), 1, function(x) sd(x)/mean`



```
> ok <- cvv > .08 & cvv < .18
> fALL <- ALL[ok,]
> show(fALL)
```

```
ExpressionSet (storageMode: lockedEnvironment)
assayData: 3841 features, 128 samples
  element names: exprs
protocolData: none
phenoData
  sampleNames: 01005 01010 ... LAL4 (128 total)
  varLabels: cod diagnosis ... date last seen (21 total)
  varMetadata: labelDescription
featureData: none
experimentData: use 'experimentData(object)'
  pubMedIds: 14684422 16243790
Annotation: hgu95av2
```

```
> allx2 <- data.frame(t(exprs(fALL)), class=ALL$BT)
```

```

> library(rpart)
> rp1 <- rpart(class~.,data=allx2)
> plot(rp1)
> text(rp1)

```

